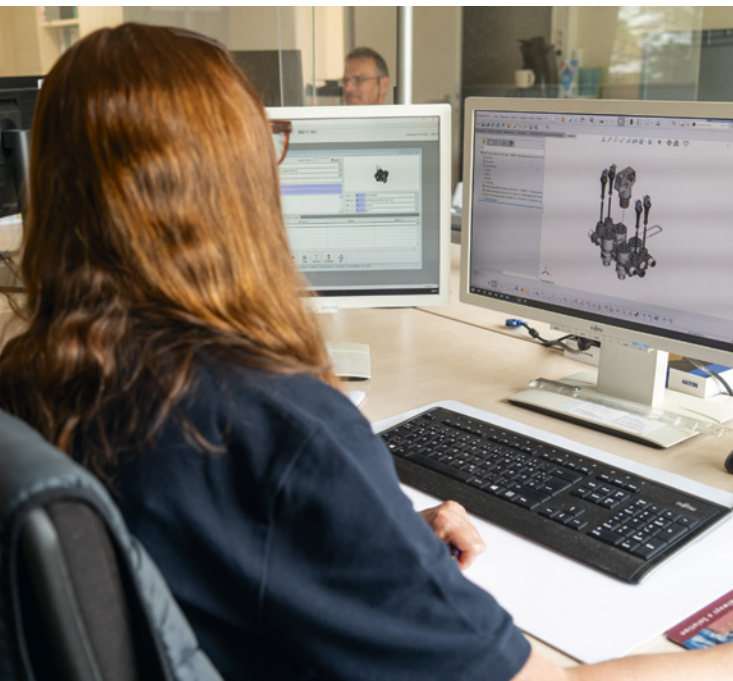




**altek**







## A warm welcome to Altek GmbH

We are a systems supplier of innovative components for the control of liquids used in plant protection and municipal equipment. All over the world our clients rely on our products – with decades of experience in the field of pumping and control technology, Altek GmbH is your competent contact for plant protection technology and Precision Farming.

At the Swabian location of Rottenburg, near Tübingen, we focus on research and development. Our daily work is targeted on confronting the many challenges in agricultural technology and on further developing our products in the best way possible for future requirements. Topics such as environmental protection, saving resources and more efficient products are more important than ever and require the highest level of precision farming. The smart products from Altek GmbH aim at meeting these demands in an optimum way and already make it possible to have specific applications with electronic support which are tailored directly to the plant.

Regionality and sustainability are similarly important topics for Altek GmbH, we develop and assemble our products exclusively in Germany. Unlike many other industrial operations, for years we have been pursuing a strategy of a high degree of vertical integration and local sourcing. This not only supports our independence, in particular from worldwide suppliers, but it also reinforces the continuation of our delivery performance and quality.

We are ideally suited to meet your individual wishes and needs. Take a look for yourself: with this brochure we would like to give you an insight into our work, our services and our products. We are looking forward to hearing from you and hope you enjoy reading our brochure!

*Your Altek GmbH team*

### We inspire by:

- ▶ working together as partners
- ▶ our high level of competence
- ▶ provision of services to the greatest benefit of customers
- ▶ timely deliveries of first-class products

### You benefit from:

- ▶ many years of experience
- ▶ technical know-how
- ▶ high product quality
- ▶ short delivery times and fast service
- ▶ customer-oriented optimisation and flexible solutions
- ▶ first-class consulting



## More than 50 years of experience and quality

### 1965

#### Company formation

*The origins of Altek GmbH lie in the innovative spirit of two engineers and two entrepreneurs from the Rau Sprayer company who did not want to rely on a product from the competition when it came selecting a pump for their crop protection sprayer. So, in 1965, they began to develop and produce the first Altek pumps in the garage of one of the founders of the company.*

### 1979

#### Construction of a new company building

*Because of the increased importance of the market, in 1979 a new and larger company building was constructed, in which Altek GmbH still has its head office today.*

### 2008

#### Thomas Schwert becomes Managing Director of Altek GmbH

*With the appointment of Thomas Schwert as Managing Director, Altek GmbH gained the valuable support of an experienced leader in the agricultural technology sector.*

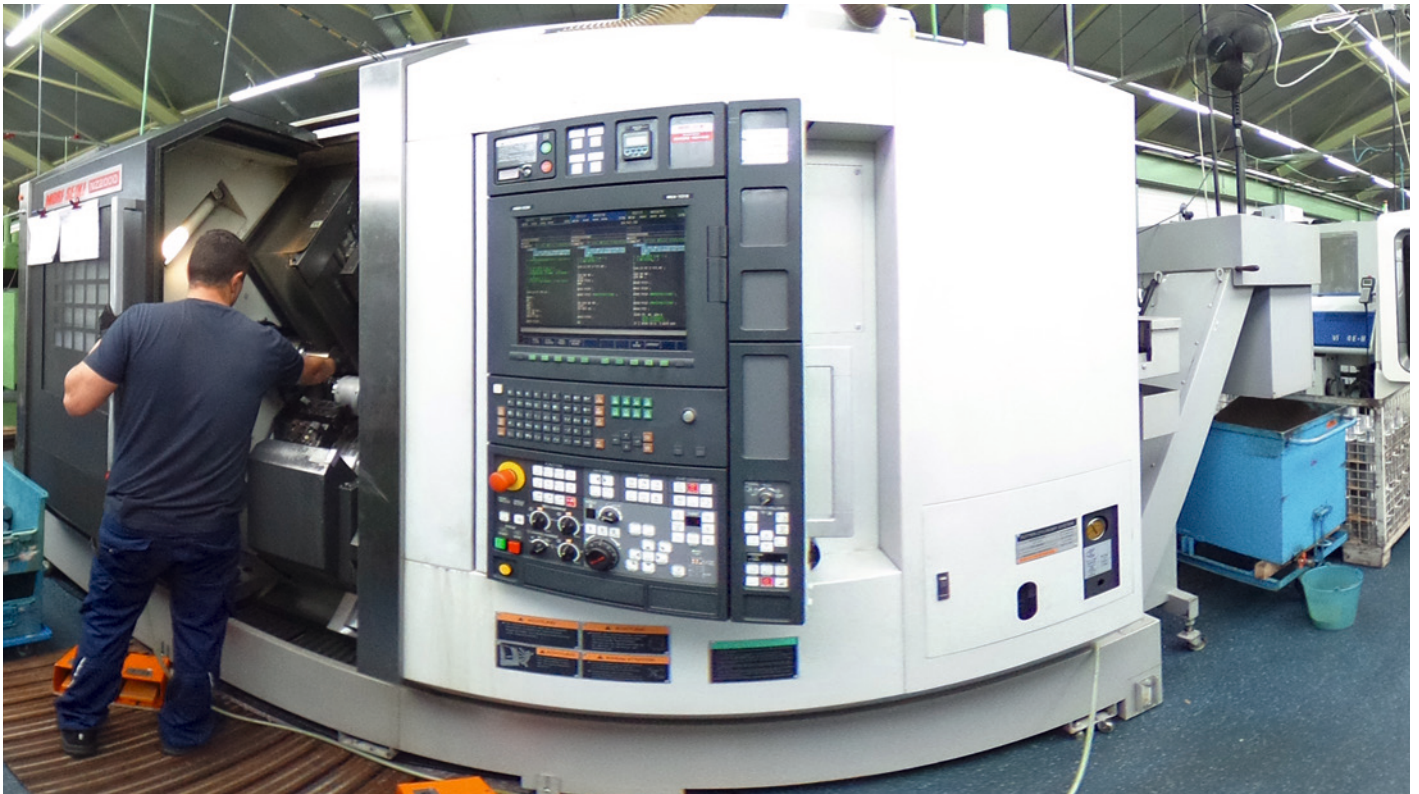
### 2015

#### The company's 50th anniversary

### 2020

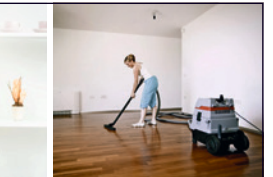
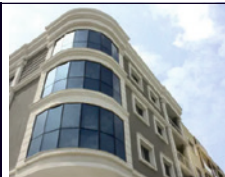
#### Acquisition by Bertolini Pumps, the Italian pump manufacturer established in 1918

*The merger of two market leaders in the manufacturing of pumps for the agricultural sector and beyond.*



# SCHÜTZ

## GEBÄUDESERVICE



Gebäudereinigung | Unterhaltsreinigung | Baureinigung | Glasreinigung  
 Grundreinigung | Jalousienreinigung | Teppichreinigung | Industriereinigung  
 Maschinenreinigung | Solaranlagenreinigung

## Our products

Our product portfolio ranges from individual components such as pumps, regulators, valves and filters through to complete solutions. The guarantee of high quality has always been given the highest priority in the design and manufacturing of our products. With worker self-checking we share responsibility with our competent colleagues and thus create a high degree of quality consciousness in the company.



## Robust and long-lasting: Piston diaphragm pumps

Our Altek piston diaphragm pumps are characterised by their robustness and durability thanks to solid materials and highly developed construction. The modular structure and convenient dimensions make it easier to fit them into plant protection equipment when compared to our competitors. Since as long ago as 1965 we have been building pumps for use in crop protection sprayers and municipal equipment which, year after year, have been providing reliable service around the world. Depending on the application, we can equip the piston diaphragm pumps with NBR, Desmopan or FKM diaphragms.

After the acquisition of Altek by the Italian pump manufacturer Bertolini in 2020, we have introduced the Polypumps series into our range. These exclusive Bertolini pumps in polypropylene are patented worldwide and are particularly suitable for use with highly corrosive media. They are characterised by their high operational safety standards and also guarantee high standards in terms of quality and service.

## Nozzle body control

The Spray-Stop and Multi-Spray pneumatic and electropneumatic control valves are characterised by two special and unique selling points:

- ▲ Sealing by a Stainless pin with a lip seal
- ▲ 1.2-watt power input with the Direct-Control/Master design

### The smart alternative to pulse width modulation (PWM): the GPS-controlled Altek application system “Smart-C-Spray 124”

The new system allows operators to use all generally available and recognised injector nozzles in their plant protection applications. Altek Smart-C-Spray makes it possible to have consistent and individual l/ha outputs with turn-compensation as well as individual nozzle switching up to the 4x nozzle body.

In addition to traditional section control, the Smart-C-Spray system function offers many further advantages. The most important of the many functions are:

- ▲ Control of 1x to 4x nozzle bodies, whereby the spray nozzles are controlled either independently of one another or in combinations from the terminal in the cab, in order to achieve the best possible spraying result
- ▲ Auto Nozzle Select (ANS) allows an automatic change of nozzle size/nozzle combination (2x and 4x systems) in order to compensate for changes in speed or quantity
- ▲ Flow Monitoring (Altek Nozzle-Spy) at each nozzle position provides real-time feedback to the spraying terminal (2x and 4x systems)



**HINGER**  
electronic

[www.hinger-electronic.de](http://www.hinger-electronic.de)

- elektronische Steuerungen
- Leiterplattendesign / Fertigung / Bestückung
- Entwicklungen kundenspezifisch
- Labor- / Netzgeräte / Sondernetzgeräte
- Papierkontrollen

Neckartalstraße 6/8  
72108 Rottenburg-Bieringen

Tel. +49 (0)7472 96460  
mail [info@hinger-electronic.de](mailto:info@hinger-electronic.de)



Helmut Ast Metallgießerei GmbH

Im Grund 14 · 72469 Meßstetten

Tel. 07431 6564

[giesserei-ast@t-online.de](mailto:giesserei-ast@t-online.de)

[www.giesserei-ast.de](http://www.giesserei-ast.de)

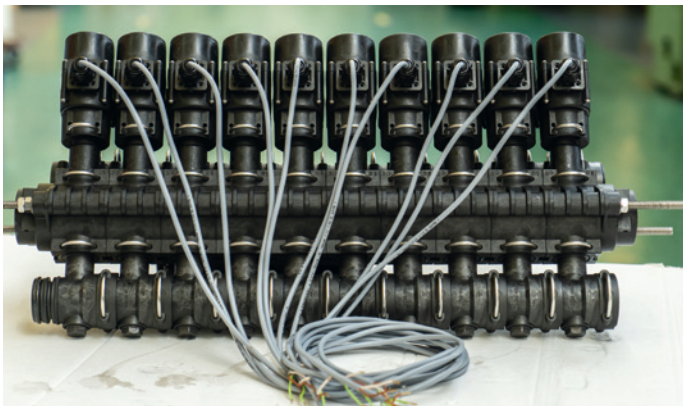


## Compact and flexible: section valves

In addition to the already familiar advantages of our section valves, we have made further developments to the Modular Fit valve and optimised it in many ways:

- ▶ The proven lip seal and stainless steel pin has been used for many years in Spray-Stop and Multi-Spray is now a feature in the new valve body.
- ▶ Sealing with the proven principle of lip seal and pin is also used in the new pressure relief channel. The relevant sealing elements are housed in a new sealing plug, which can very easily be exchanged during servicing.
- ▶ Instead of the safety fuse used to date, an electronic circuit-breaker is now used. This provides reliable protection for the motor against overheating, e.g. in case of insufficient voltage supply.

Also, with the Quick-Fit valve, the plug-in system allows fast and efficient assembly of the valves. The compact and flexible construction means that the Quick-Fit valve is perfect for use on the boom as a section valve close to the nozzles.



## Electric and smart: pressure regulator

Our tried and tested ePPR 400 proportional regulator has been adapted to the requirements of today's modern crop protection equipment. With a more powerful and faster motor, the total opening/closing time has been reduced to nine seconds.

At the electrical connection of the regulator, a square wave signal has also been provided for possible calculation of the piston position. The new, compact housing design allows installation even under very tight conditions.

Standard regulators can only react to set value changes. The Altek SBR500 ball regulator works proactively. Upcoming set value changes are implemented in real time.

Thanks to the SMART Control system with permanent signal output of the ball position it is possible to adjust the regulator with pinpoint accuracy, without any lengthy settling process. When a rinsing programme is selected, the correct ball position is automatically adjusted: pressure and flow rate are immediately achieved for the cleaning nozzles. The brushless dc motor makes for durability and low-wear operation.




Präzisionsteile aus Duro- & Thermoplast

WERKZEUGBAU | BIO KUNSTSTOFFE | SCHUTZAUSRÜSTUNG

J. H. Andress GmbH & Co. KG · Werrastraße 31 · 99817 Eisenach · Tel. +49 (0)3691 795460  
info@jhandress.de · [www.jhandress.de](http://www.jhandress.de)



## Ball valves: long working life and wear resistance – also available as smart versions

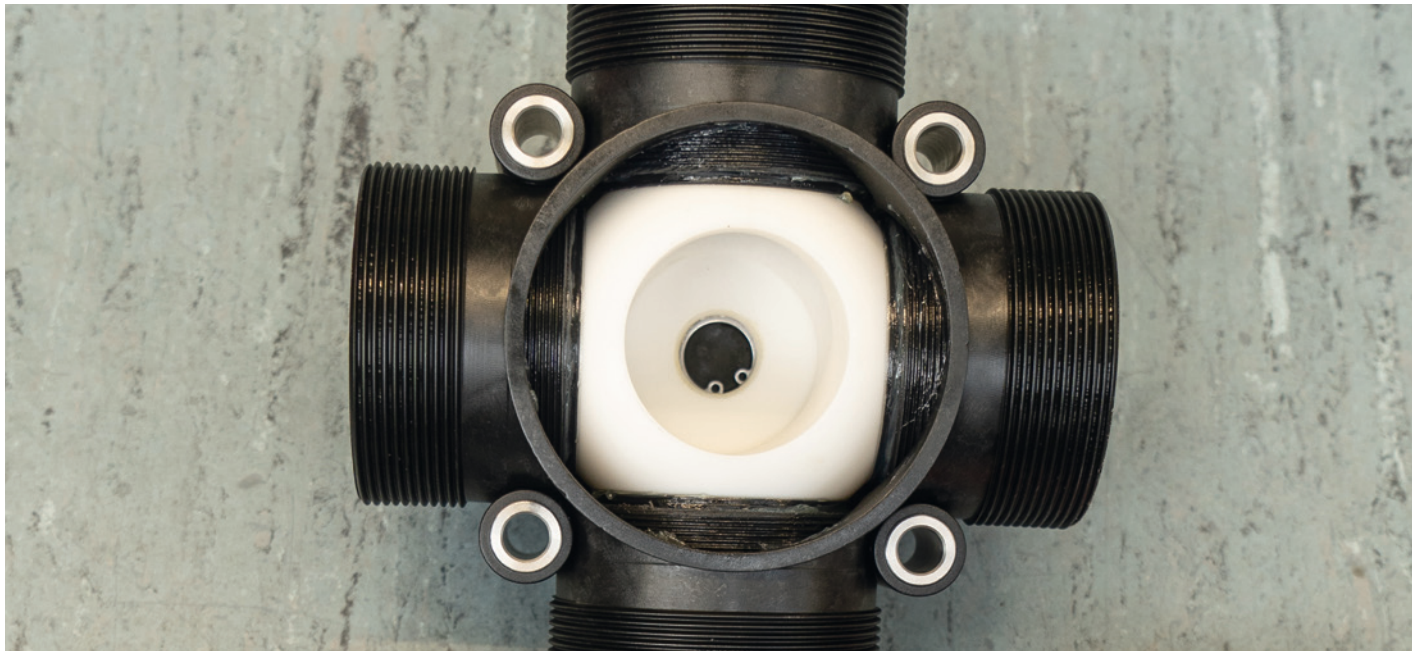
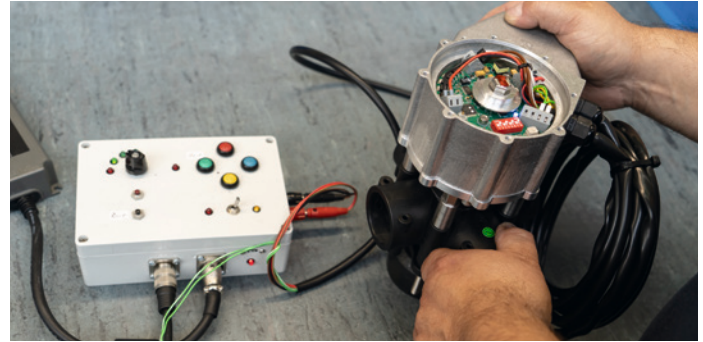
We can supply you with ball valves in dimensions of 1¼", 2" and 3" for both suction and pressure systems. They can be controlled manually, electrically and by smart control in the bus system. Because of our long years of experience and thanks to good material combinations, our valves offer the best possible wear performance, even with intensive working and crop protection agent applications.

Smart ball valves offer the following advantages:

- ▲ Integration into the CAN bus system of the crop protection equipment
- ▲ OEM individual CAN communication possible
- ▲ direct control via the circuit board diagnosable
- ▲ 45° position of the ball possible

## Pressure relief valves 3–15 bar

Altek GmbH offers pressure relief valves pre-set in the factory for different pressure levels. With their large cross-sections and smooth flow characteristics, they are suitable for flow rates up to 400 l/min. Because of their particular structural design they are nevertheless compact and are very well adapted for integration into the Altek Quick-Fit system.



**reiser**  
Kunststoffverarbeitung  
Werkzeugbau

**gmbh**  
your vision is our mission  
die Kunststoffexperten

Produkte und Teile aus Kunststoffspritzguss – Maschinen bis zu 650 to Schließkraft  
Groß- als auch Kleinserien – Produktion vollautomatisch wie auch mit Einzelbedienung  
Lieferung von kompletten Baueinheiten – auch über Tochterunternehmen in Ungarn





## Pressure filters

The reliable filtering of crop protection agents is of major importance for the operational condition of crop protection equipment. Altek GmbH has incorporated some essential features into the development of its pressure filters:

- ▶ Considerably improved user protection: the filter cartridge can be removed vertically from the filter housing for cleaning purposes thus preventing any undesirable escape of chemicals. No contamination of users, environment or machine.
- ▶ Innovative delivery of liquids: constant rinsing of the filter element by the return flow of liquid from the regulator. This reduces the amount of dirt accumulated on the filter and prevents it from becoming blocked.
- ▶ Only the liquid flow needed for the application is filtered: this produces a saving in space.



## Multiple variations with Altek Quick-Fit plug-in system

For many years the Altek Quick-Fit plug-in system (AS) has been a successful part of our product range. It allows many plug-in variations, e.g. with hose fittings, T-pieces, cross-pieces or tank fittings, and is the simplest and fastest connection method for creating fluid circuits for crop protection equipment. Our Quick-Fit-system is compatible with all Altek components. The outstanding feature of our products is the excellent strength of the material. We use glass-fibre reinforced plastics and gaskets in FKM materials (Viton) for sealing.



Ihr Partner in Gomaringen

- Dichtungstechnik
- Kunststofftechnik
- Filtertechnik
- Anwendungstechnik

[www.hildi-gmbh.de](http://www.hildi-gmbh.de)

HilDi GmbH • Raiffeisenstraße 6 • 72810 Gomaringen  
Tel.: 07072-9176-0 • Fax: 07072-9176-20 • [vertrieb@hildi-gmbh.de](mailto:vertrieb@hildi-gmbh.de)



# altek

## **Altek GmbH**

Boschstraße 1  
72108 Rottenburg, Germany

Phone: +49 7457 9426-0  
altek@altek-gmbh.de

[www.altek-gmbh.de](http://www.altek-gmbh.de)

## **Altek International Ltd.**

Lincolnshire, U.K.

Phone: +44 1652 688 889  
info@altekinternational.com

[www.altekinternational.com](http://www.altekinternational.com)

## **Idromeccanica Bertolini S.p.A.**

Reggio Emilia, Italy

Phone: +39 0522 306641  
email@bertolinipumps.com

[www.bertolinipumps.com](http://www.bertolinipumps.com)



**BERTOLINI**  
pumps